

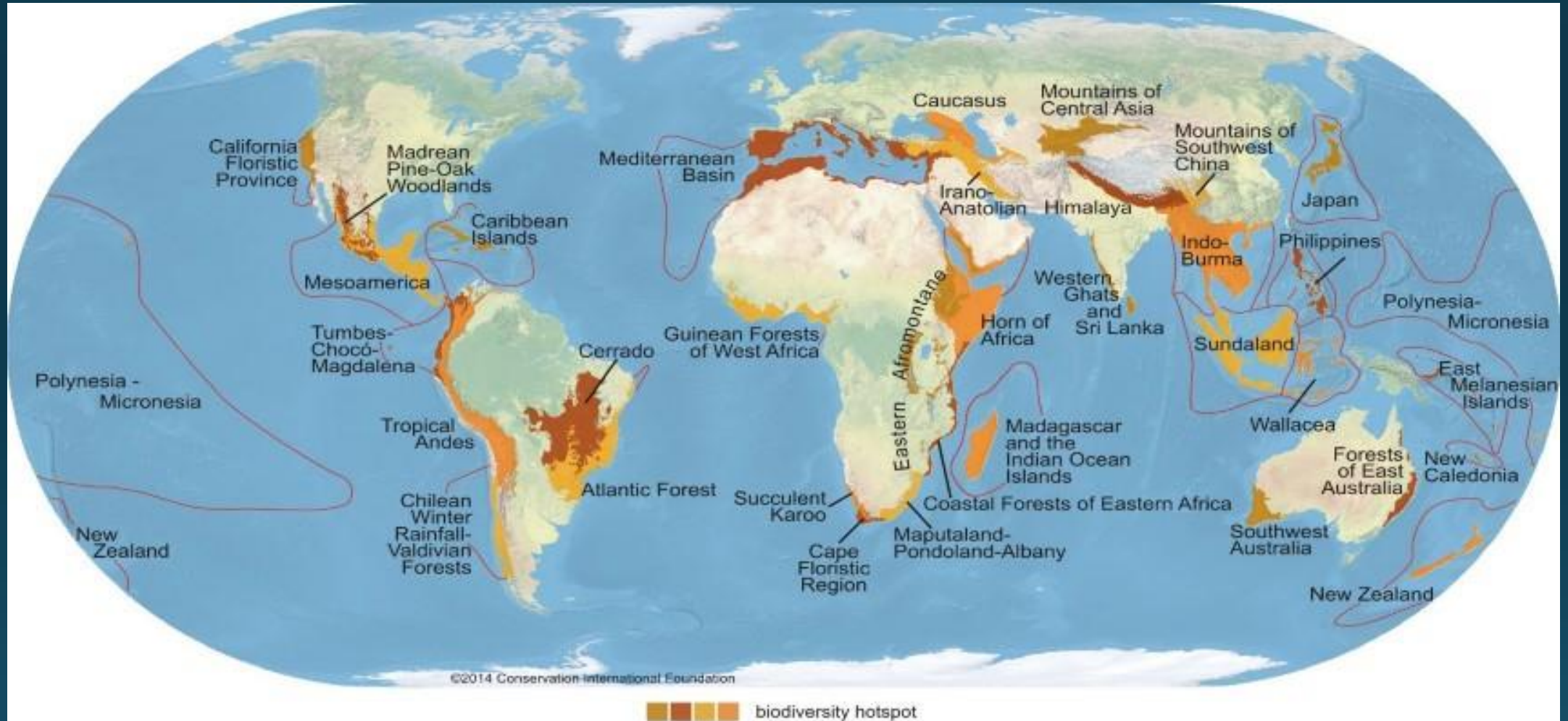
C2C workshop- Lessons learned from

KANI MODEL -ABS

Remembering Mr. Daniel Ole Sapit

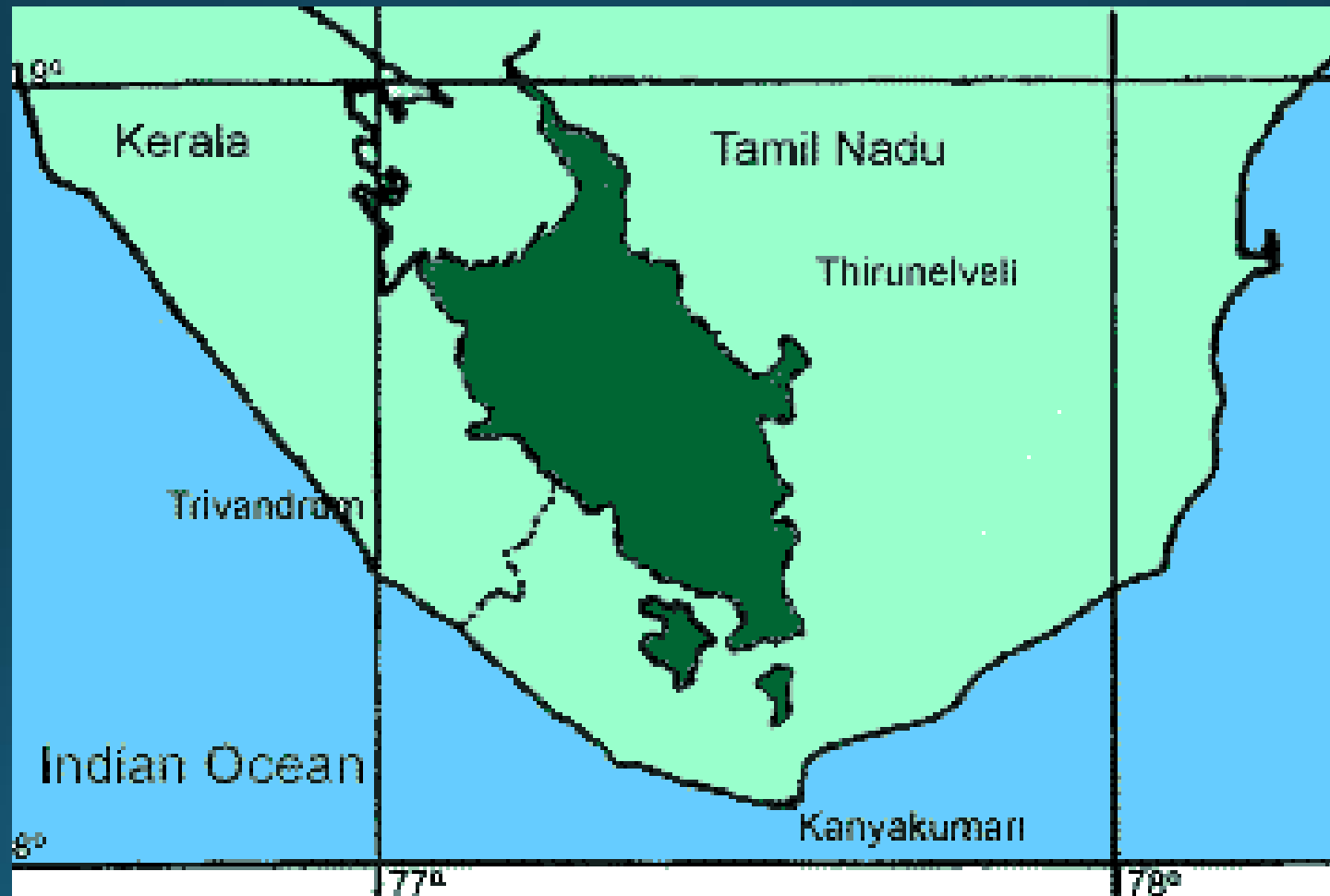


Biodiversity Hotspots



Conservation International (conservation.org) defines 35 biodiversity hotspots — extraordinary places that harbor vast numbers of plant and animal species found nowhere else. All are heavily threatened by habitat loss and degradation, making their conservation crucial to protecting nature for the benefit of all life on Earth.

Agasthyamala Biosphere Reserve



Agasthyamala Bio reserve

- The biosphere reserve also has 3 wildlife sanctuaries located inside it: Shendurney, Peppara, and Neyyar. Apart from that the "Kalakad Mundanthurai Tiger Reserve" is also part of the reserve.

Agasthyarkoodam- Sage Agasthya



The Kani community-recognition



The Kani community

- Indigenous community
- Western Ghats
- Traditional Knowledge
- Medicinal plants..



Arogyapacha.. The local name



Before Rio..??

- *Trichopus zeylanicus ssp. travancoricus*
- Antifatigue property
- Traditional knowledge of the community
- Sharing the knowledge with the scientific community
- Sharing the benefit with the knowledge bearers
- Access and Benefit Sharing ??

Article 8(j) of CBD

- Each contracting Party shall, as far as possible and as appropriate:
- Subject to national legislation, respect, preserve and maintain knowledge, innovations and practices of indigenous and local communities embodying traditional lifestyles relevant for the conservation and sustainable use of biological diversity and promote their wider application with the approval and involvement of the holders of such knowledge, innovations and practices and encourage the equitable sharing of the benefits arising from the utilization of such knowledge innovations and practices.

- The *Nagoya Protocol on Access to Genetic Resources and the Fair and Equitable Sharing of Benefits Arising from their Utilization to the Convention on Biological Diversity* is an international agreement which aims at sharing the benefits arising from the utilization of genetic resources in a fair and equitable way. It entered into force on 12 October 2014,

EQUATOR  INITIATIVE



Empowered lives.
Resilient nations.



KERALA KANI COMMUNITY WELFARE TRUST

India



Equator Initiative Case Studies

Local sustainable development solutions for people, nature, and resilient communities

Indian leg of C2C, October 2015



Visit to Kani community



Continuing efforts...



Capacity building...



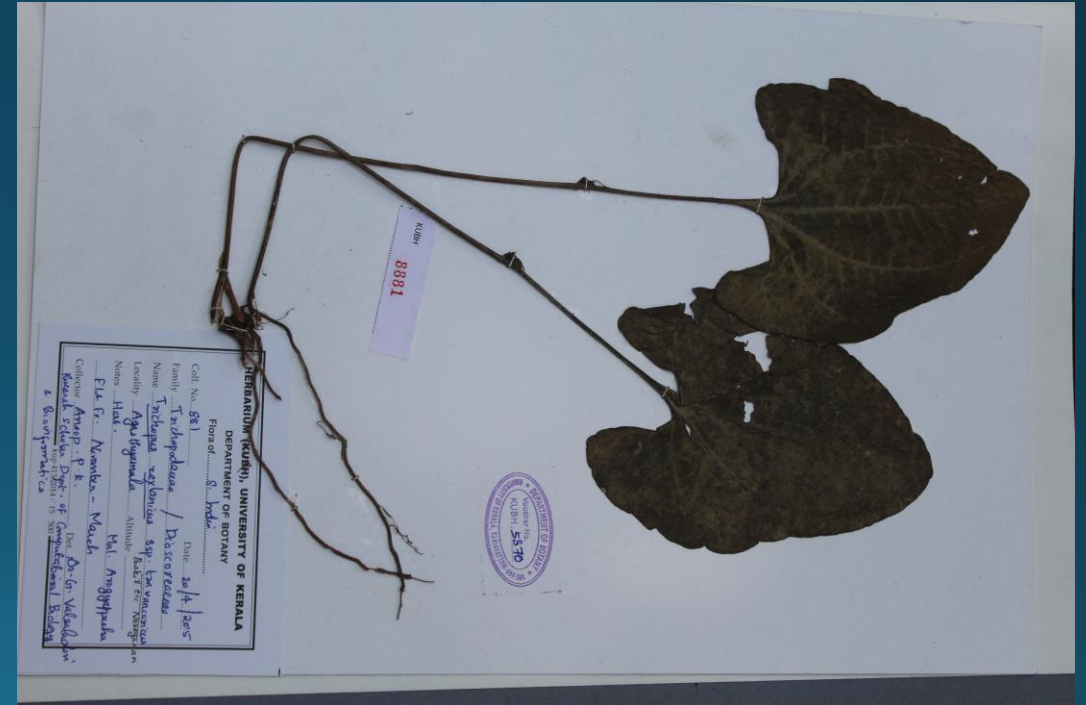
Capacity building...

Women-youth representation...



Scientific documenting.....

Studies at University of Kerala



Next generation...



Next generation...



Discussion Forest dept, JNTBGRI, Pharma company with Community....



Bringing it into mainstream discussion..

National Biodiversity Congress 2016



Honoring the community members



International attention...

IUCN World Conservation Congress,
Hawaii. 2016



Following up at the community level



Taking it to the next level...



Local body chief from Kani
community



Teachers interacting with community
members...







- Sometimes it falls upon a generation to be great. You can be that great generation.

Nelson Mandela.

- The earth provides enough to satisfy every man's needs, but not every man's greed.

Mahatma Gandhi.



Thank you for listening ..